

# ANNUAL REPORT

## 2024



# Contents

<i>Director’s Foreward</i>	<i>02</i>	<i>Transparency</i>	<i>12</i>
<i>About Us</i>	<i>03</i>	<i>Our Funding Partners</i>	<i>13</i>
<i>2024 Highlights</i>	<i>04</i>	<i>Our Networks</i>	<i>14</i>
<i>Planting Location</i>	<i>05</i>	<i>The Team</i>	<i>15</i>
<i>How We Work</i>	<i>06</i>	<i>Finance</i>	<i>16</i>
<i>Our Impacts</i>	<i>07</i>	<i>Looking Forward</i>	<i>17</i>
<i>Our Programs’ Focus</i>	<i>11</i>		



# Director's Foreword

*Dear Friends of Nature,*

As we celebrate 17 years of impact, we are pleased to share our 2024 Annual Report – a year marked by growth, collaboration , and meaningful progress. This report presents the financial results for 2024 and tree-planting operations from April 2024 to March 2025.

In 2024, Trees4Trees planted 4.65 million trees across 15 regions in Indonesia, bringing our total to over 15 million trees planted since 2008. This milestone is more than just numbers – it represents ecosystems revitalized and thousands of farming families gaining access to sustainable livelihoods through reforestation and education.

These achievement are made possible through the support of our partners and stakeholders. Over 135 companies participated in our mission through CSR and ESG initiatives, while collaborations with institutions such as IPB University and BRIN enhanced the scientific rigor and reach of our programs. On the ground, more than 1,900 local residents served as community facilitators and nursery workers, ensuring lasting impact.

Looking ahead to 2025, our tasks are clear: scale our efforts, restore degraded landscapes, protect biodiversity, and uplift communities through inclusive, sustainable development.

We invite you to continue walking this path with us – because together, we are not just planting trees; we are growing a future. On behalf of the entire Trees4Trees team, thank you to our partners, sponsors, and especially the local communities who are the heart of our mission. Your continued support fuels our progress and inspires our vision for a greener, more resilient Indonesia.

**Pandu Budi Wahono**  
Trees4Trees Director





# About Trees4Trees

Trees4Trees (Yayasan Bumi Hijau Lestari) is a non-profit organization dedicated to renewing the environment and empowering local communities through tree-planting and education. With the support of our donors, our program has continued to grow across tropical Indonesia since 2008, advancing our green mission through community-based forestry.

We collaborate directly with local communities, cultivate seedlings in our own nurseries, and partner with local farmers to grow trees, improving degraded lands across rural, urban, and coastal areas.

## Our Mission

We work to improve the environment and the lives of people in local communities through planting trees, education, and related services, and by doing so, create value for all stakeholders in the stream of our activities.

## Our Vision

We build a self-sustaining program for restoring the health of the environment and improving social well-being.

### Our visions include:

- Renewing the Environment
- Economically Effective
- Sustainable Prosperity
- An Engaged Approach to the Solution



## Our impact focuses on

-  ECOSYSTEM RESTORATION
-  SUSTAINABLE LIVELIHOODS
-  BIODIVERSITY RESTORATION

## Our 17 YEARS Achievements




**15.9 million**  
trees planted



**90,438**  
farming families  
helped



**570**  
villages supported



**3.14+ million**  
tons of CO2e captured



**13,700+**  
hectares of land and  
**55+ coastal** areas restored



# 2024 HIGHLIGHTS

2024 marked a major milestone in our tree-planting journey as we significantly expanded our reach across diverse landscapes, both terrestrial and coastal. With strong support from our partners, sponsors, and local communities, our efforts during 2024 planting season grew in scale and impact.

## Our 2024 Key Achievements



**4.65 million trees planted** including terrestrial trees and mangroves



**4 nurseries operating**, with **6 million** seedlings capacity per year, producing **33 tree species**



**3,688 hectares** land restored



**550 volunteers joined** our tree-planting events both in rural and urban areas



**21,174 local farmers** started in small holder forestry



**234 villages** supported through tree-planting programs

Our first-round monitoring showed that

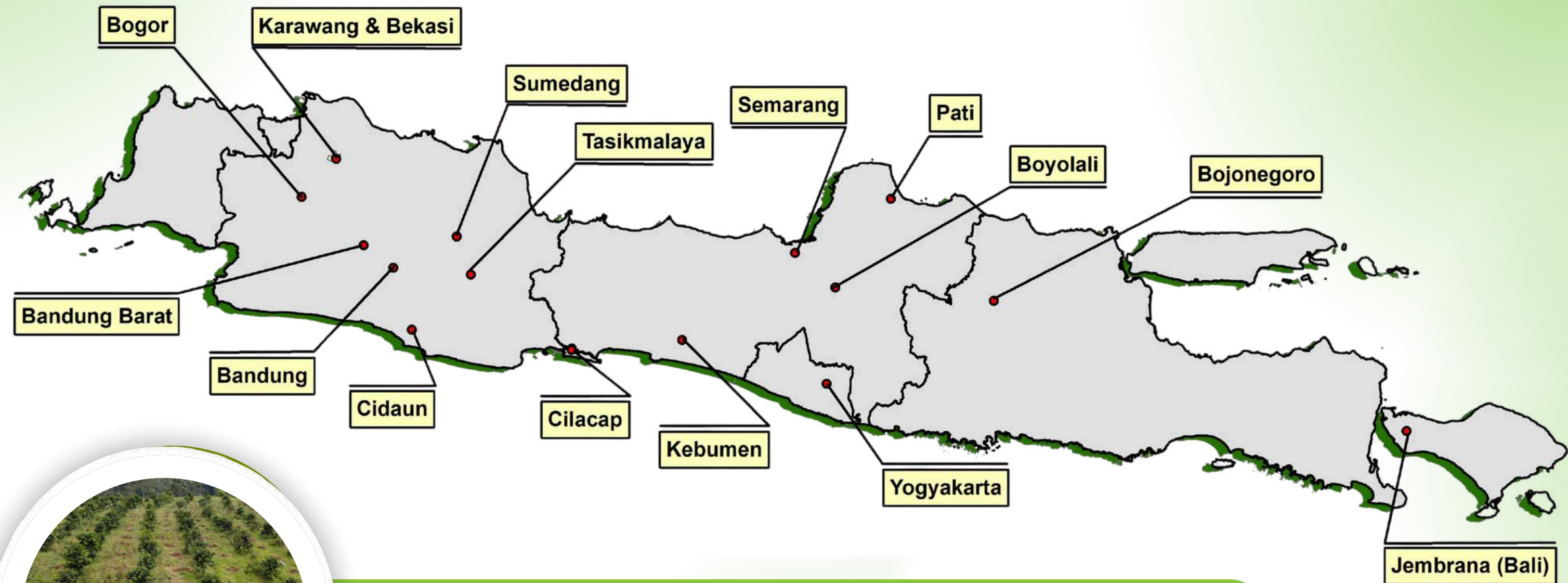
**94%**

of all distributed trees were planted alive and healthy. Annual monitoring continue for up to two years to ensure survival and impact.



# Our Planting Location

We planted over 19,800 plots of land in both community and public lands across 15 areas in Java and Bali, Indonesia.



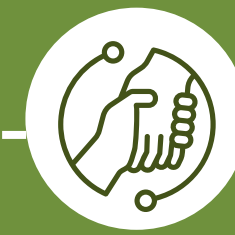
**In 2024, we expanded our planting to two new locations:**  
 The Citanduy Watershed in Tasikmalaya, West Java, and the Sanghiang Gede Watershed in Jembrana, Bali. Each playing a vital role in local ecosystem restoration.

# How We Work

Our tree planting is grounded in a community-based forest management system, a practical approach to:



**Fostering a healthy environment**



**Enhancing social welfare**



**Building economically independent communities**

## How is it Implemented?

Through community-based forest, local communities benefit directly from the tree planting efforts by:

- Receiving training in forestry best practices
- Gaining ownership of the planted trees
- Sustainably harvesting trees products, such fruits, nuts, buds, leaves, and sap that supports both their livelihoods and long-term well-being.

## Type of Forestry We Do

We apply two main forestry approaches to support both the environment and local communities:

### Agroforestry

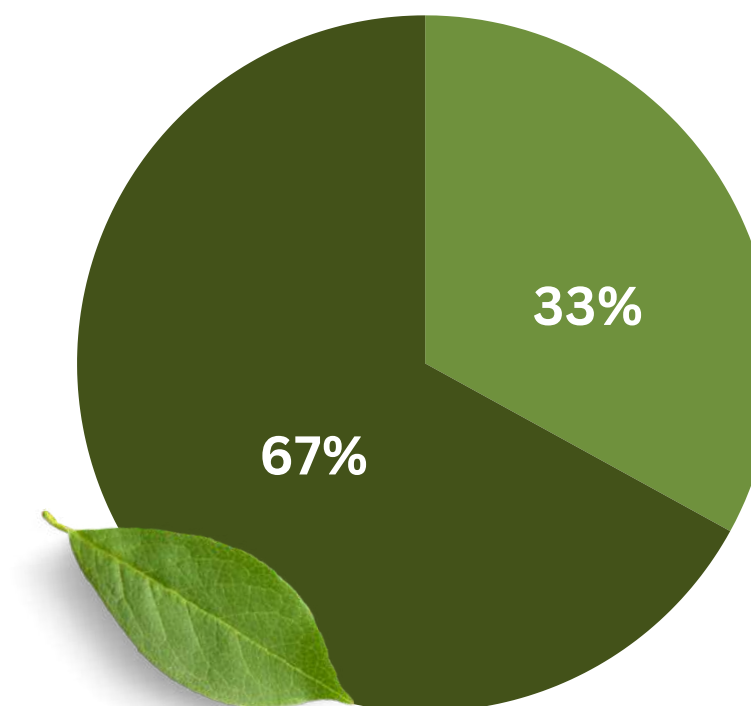
Enhances land productivity by integrating trees as shading with agricultural crops, such as cassava, taro, chilli, and various vegetables.

### Conservation Forestry

Planting trees that protect natural resources, preserve biodiversity, and maintain ecosystem balance. This includes planting specific species that support water conservation and resilient to drought.

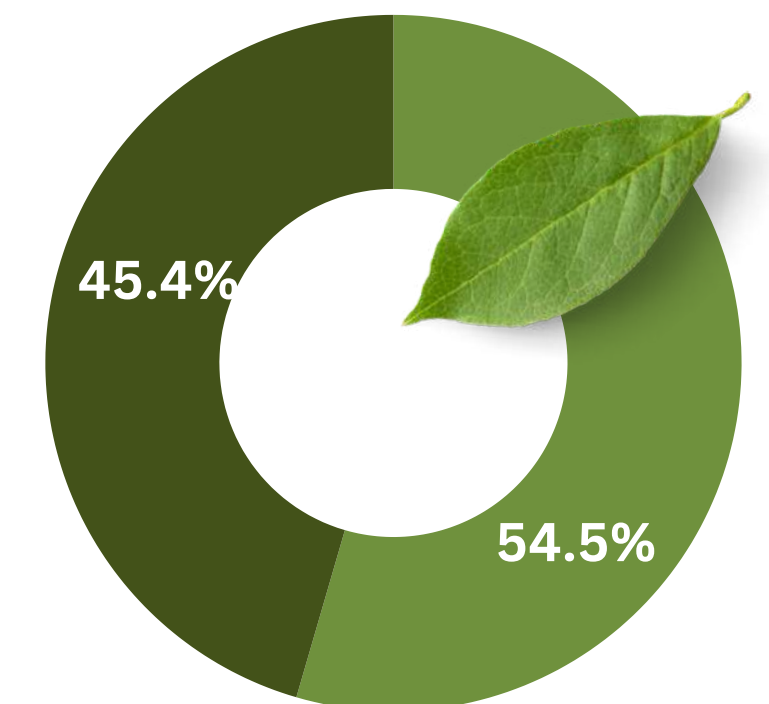
## Tree-planting Based on Type of Forestry

● Conservation ● Agroforestry



## Type of Trees Planted in 2024

● Fruit Trees ● Timber Trees





# OUR 2024 IMPACTS

Impact is at heart of every program we run. Our tree-planting programs go beyond just putting trees in the ground. We ensure that each tree is part of a bigger mission: restoring ecosystems, supporting local livelihoods, and protecting biodiversity. Together with our supporters, we make every tree count – creating lasting change for people and the planet.



*"My village faces water scarcity, with much land converted to cornfields and housing. I believe sustainable farming is key to protecting the environment and securing water, and that's what I'm working on with Trees4Trees."*

**Mubarak**  
Tree Grower

## Ecosystem Restoration Impact

### 857.4 million kg CO<sub>2</sub>e sequestered

including green and blue carbon, contributing reduce green house gas emission and supporting global climate action.

### 10 watershed areas restored

4.47 million trees planted within these watersheds across four provinces in Java and Bali, helping to address critical threats, mainly siltation and erosion by degraded land due to unsustainable land use and conversion.

### 69 drought-affected villages supported

with over 1.6 million trees planted, offering a sustainable, nature-based solution to improve soil health and strengthen water resilience in local communities.

### Supports vital water sources and springs

Through agroforestry and conservation methods, our tree planting supports vital water sources. Among them are:

- The Citarum River in West Java, a key water source that serves more than **27 million people**.
- Tratang Spring in Tunjungseto Village, Kebumen Regency, Central Java, which supplies clean water to around **800 people** across more than four hamlets.



## Sustainability Livelihood Impact

**Over 1,900 local community members** employed as seasonal nursery workers and field facilitators, providing new job opportunity.

**Over 3,600 farmers across 177 villages trained** in sustainable farming practices, building their knowledge, capacity, and skills.

**21 training topics** were delivered in farmer training.

**20%** among training participants are women.

### Enhancing Rice Production with Dryland Paddy Farming

Climate change threatens harvests, pushing farmers to adapt. To enhance rice production and food resilience, we launched a Dryland Paddy Cultivation Program – offering climate-smart livelihood alternatives and helping farmers to grow rice in drier conditions.

In 2024, **85 farmers** across **11 villages** in West Java and Central Java were received **400 kilograms** of high-quality dryland paddy seeds (padi gogo), training, and hands-on assistance. By 2025, some begun harvesting, gaining new income and food sources.



### Optimizing Non-Timber Products

To support local economy, our tree planting encourage the cultivation of multipurpose trees, especially fruit trees, to strengthen livelihoods through **high-demand non-timber products**.

**Coffee beans, cloves, and stinky beans (petai)** are among most in-demand non-timber products.

By providing these trees to farmers, we help generate sustainable income for farming communities.





## Women Empowerment

Women play a vital role in agriculture, contributing to food security and the well-being of their families and communities. In Indonesia, women's participation in agriculture is high - 61% of rural women work in the sector, and 40% of domestic food comes from women-managed kitchen gardens. Globally, they make up 43% of the agricultural workforce. (FAO)

In our tree-planting operations, nearly 6,000 women are actively involved as tree-growers and nursery workers. We are committed to gender equality, ensuring equal opportunities in roles, training, and development.

**26%**

of farmers partners in our tree planting operations are women.

**49%**

of seasonal workers in our nurseries are women.



*"This program really supports women and widows like me. I hope the trees I've planted will bear abundant fruit, adding to my income alongside my garden harvest and a snack stall I run."*

**Euis Maryati**  
Woman Farmer

## Young Farmers

Fewer young Indonesians are choosing agriculture, viewing it as less promising in today's digital era. Rapid development has also turned rural areas – replacing farmlands with industrial and residential zones – pushing youth toward city-based jobs. In 2023, only 21.93% of Indonesia's 28.19 million farmers were under 40, according to the Statistics Agency.

Our tree-planting program creates opportunities for young people to engage in farming and restoration, aiming to grow their participation in building a sustainable future.

*"With Trees4Trees' support, I manage a demo plot, teaching villagers, especially youth, how to plant trees the right way."*

**Aditya Swara**  
(20 years old) Young Farmer

**1,400 +**

farmers partners in our tree-planting operation are young people aged 30 and under.





## Biodiversity Restoration Impact

**67%**

**of our planted trees are native Indonesian species.**

The rest are naturalized species adapted to Indonesia's ecosystem.

By planting native tree species, we contribute to preserving their populations. These include saninten (sweet chesnuts), rasamala, and puspa, which are iconic to West Java, as well as historically significant nutmeg and clove, valued for centuries as prized trade commodities from Indonesia.



*Since 2018, I've built an arboretum and added sapodilla, damar, and rasamala from the Trees4Trees program. I aim to help preserve biodiversity and raise awareness of our native trees.*

**Sutajaya**  
Tree Grower



## Restore Indonesian biodiversity key habitats

**Among the areas we're helping restore through tree planting are:**



**The Citarum Watershed** in West Java, where our assessments identified at least 66 animal species around our planting sites, including the critically endangered Javan slow loris and Javan leopard, and protected birds like the brahminy kite and crimson sunbird.



**The Kebumen Geopark** in Central Java, habitat for native bees, snakes, the endangered Javan hawk-eagle, and the vulnerable Indian sandalwood tree.

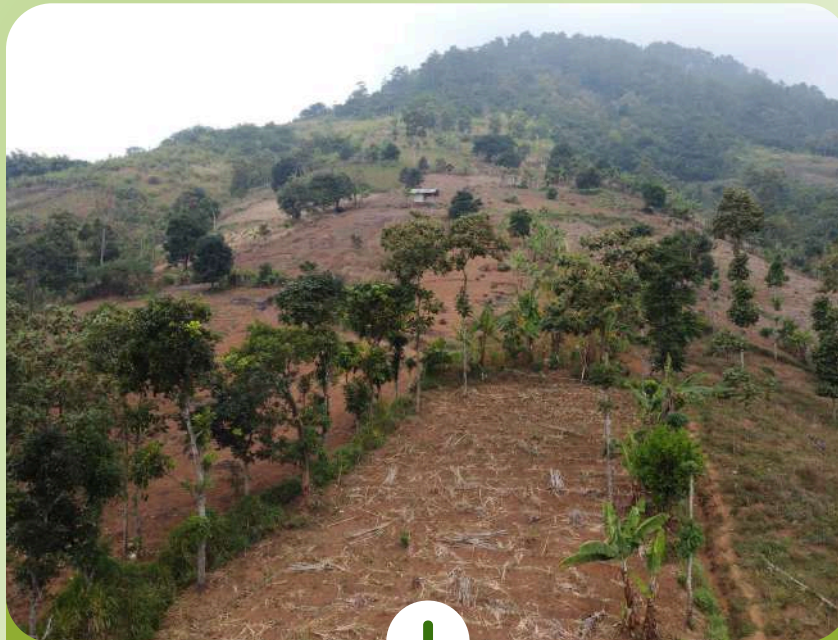
## Supporting the SDGs

Our tree-planting initiatives, made possible through the support of our partners and supporters, contribute to 10 of the 17 Sustainable Development Goals (SDGs), creating lasting benefits for both communities and the environment.



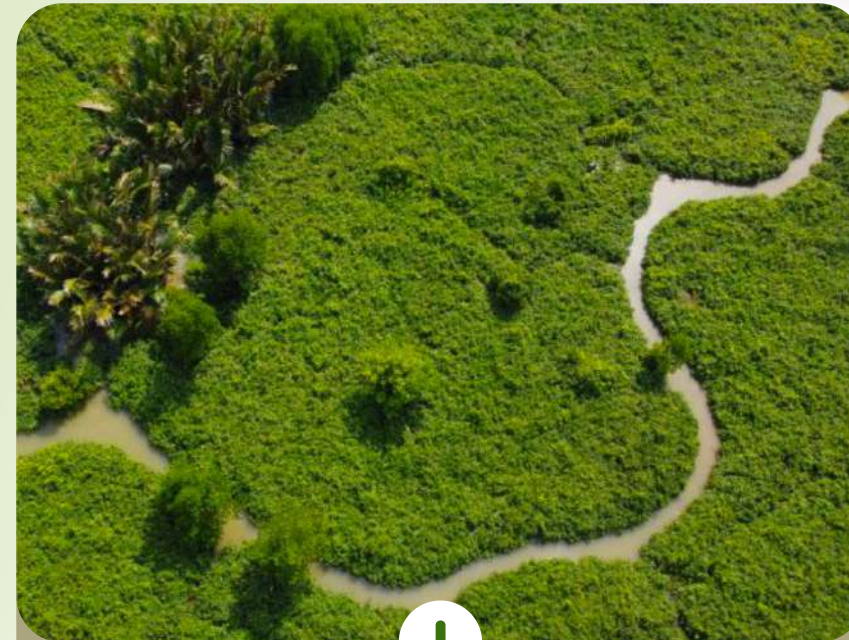


## Our Programs' Focus



### Watershed Restoration

Watersheds are crucial for water supply, biodiversity, and agriculture, but many in our working areas are threatened by serious erosion due to unsustainable land use. Our tree planting helps restore these landscapes by reducing erosion, protecting water sources, and lowering disaster risks like droughts, floods, and landslides.



### Coastal Restoration

Coastal ecosystems store blue carbon, support marine life, and sustain local economic. Since 2021, we've planted over 156,000 mangroves along Central Java's coast. In 2024, we expanded, marking the start of a larger restoration initiative on the southern coast starting mid-2025. The goal is to restore mangrove forests, reduce erosion, and support fisheries as a key local livelihood.



### Adressing Drought and Water Scarcity

Nearly 30% of our sites face annual drought. Some of them experience severe drought and depend entirely on rainwater. To help communities address this, we plant drought-resistant and water-conserving species near water sources to improve soil health and water availability.



### Urban Forestry

Rapid urban growth leads to air pollution, heat, and declining water and soil health. In 2024, we expanded tree planting in Jakarta's industrial buffer zone, continuing efforts begun in 2022. This initiative aims to boost green cover, reduce heat, improve air, water and soil quality, contributing to fight global warming.



# TRANSPARENCY

Trust and transparency are at the core of our tree-planting operation. We use self-developed technology to accurately record and monitor each tree-planting activity, ensuring our work is verifiable and accountable. Regular reports and updates are shared with sponsors and across our communication channels.

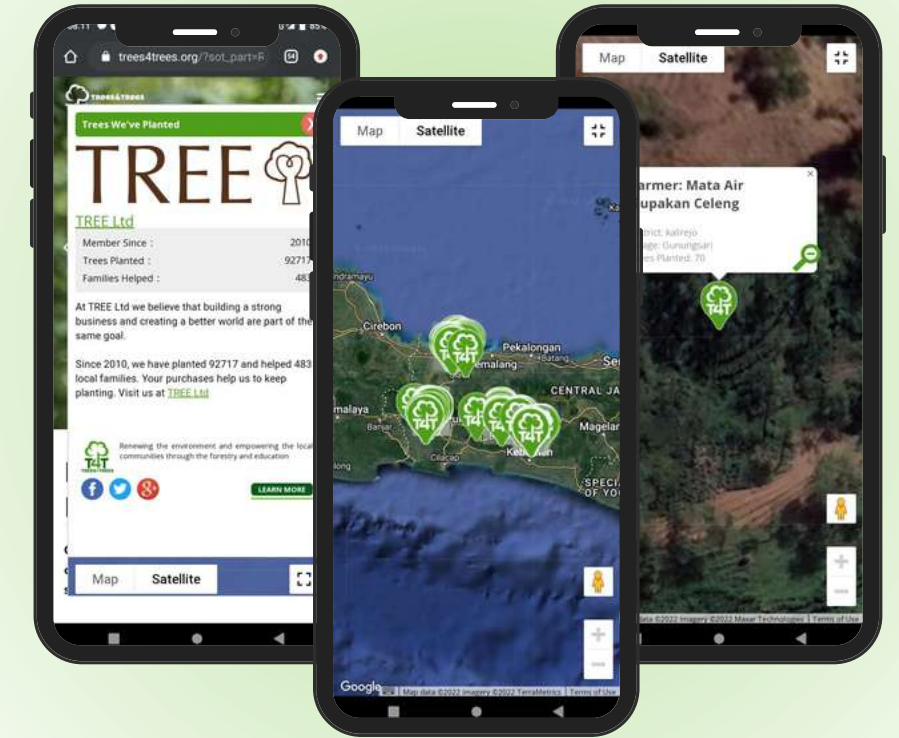


## GEKO: Our Key Technology

GEKO, our web-based and mobile app, record tree-planting detailed data into our digital database. This includes number of trees, farmers involved, planting sites, and monitoring results.

Our system is also connected to a digital map, allowing supporters to visit their donated trees using a unique number called **WIN (World Identification Number)** through [trees4trees.org](https://trees4trees.org).

In 2024, GEKO was upgraded with improved performance, a nursery management system, and new features for better data collection.



## Reporting and Publication

Sponsors of long-term projects receive detailed reports after planting. Impact stories, and videos are also shared to highlight their contributions.

Regular updates are published across our communication platforms to ensure transparency and expand our reach.



# OUR FUNDING PARTNERS

Our tree-planting efforts are made possible by the dedication and support of our funding partners. We believe, meaningful change doesn't happen alone. We collaborate with companies, foundations, institutions, and individuals who share commitment to protecting the environment and improving lives. Since our start, we partnered with more than 135 companies through their CSR and ESG programs.



## Our Funding Partners



and more...



# Our Networks

To strengthen our tree-planting outcomes, we’ve built strong networks and collaborated with a range of partners– from educational and research institutions to media outlets and key opinion leaders. These partnerships enhance both our operational performance and outreach.



## Education and Research Networks

Collaborated with **17 universities and 10 schools** in Indonesia and abroad on research, education, and tree-planting activities.

## Collaboration with IPB University

Focused on improving tree growth and seedlings quality, including applying microbes to boost resilience and productivity, monitoring pests, and disease, and enhancing planting strategies in drought-prone areas.



## Research Collaboration with BRIN (National Research and Innovation Agency)

Focused on enhancing environmental and social impact through river observation in five micro-watersheds, demo plots for land and ecosystem health, improved silviculture, higher seedling survival, and drone-based monitoring.

## Digital Collaborations & Media Engagement

To expand our reach and brand awareness, we co-created social media content with environmental communities and organizations.

### Our 2024 Digital Partners



### Mass Media Engagement

Engaged with 11 Indonesian media outlets, including print, digital, and radio.

### Trees4Trees Digital Ambassadors

We partnered with two Indonesian singers as Green Ambassadors:



**Tantri Syalindri**

Lead vocalist of the band KOTAK



**Arda Hatna**

Indonesian solo singer

Both help amplify our message to their fan base and followers. In 2024, social media collaborations with them reached a total of **+340,000 viewers**.



# THE TEAM

The green mission lives in the heart of everyone who work at Trees4Trees. Being part of our team means contributing to meaningful change for both people and the planet. From office staff to field teams, we work together to create a healthier environment and a better future for all, and we're proud to be part of this mission. We foster a supportive work culture that promotes gender equality and equal opportunities for all in roles, growth, and career development.

240

Total number of staff members

The Trees4Trees team brings diverse expertise – from forestry and environment to GIS, IT, finance, law, HR, marketing, and communication.

50%

of our staff work as field coordinators

1584

people from local communities were employed as our field team

Most of our field coordinators, with forestry and environmental backgrounds, work closely with local communities. Their dedication goes beyond sharing knowledge – they traverse steep and muddy paths to ensure our tree-planting efforts truly benefit people and nature

44

nursery staff members

365

local community members were employed as nursery workers

Backed by forestry and agricultural expertise, our nursery teams work with local community members to grow healthy, high-quality seedlings across four in-house nurseries – from cultivation to distribution.



*"Reaching farmers' land through steep terrain can be tough, but connecting with them directly and working with heart makes every challenge feel meaningful and rewarding."*

**Maratun Chasanah**  
Field Manager

“

*My passion for greenery comes to life at Trees4Trees. I love nurturing seedlings like my own children and take pride in supporting local communities by creating jobs for nursery workers.*

**Wawan Sugeng**  
Nursery Manager





# Finance

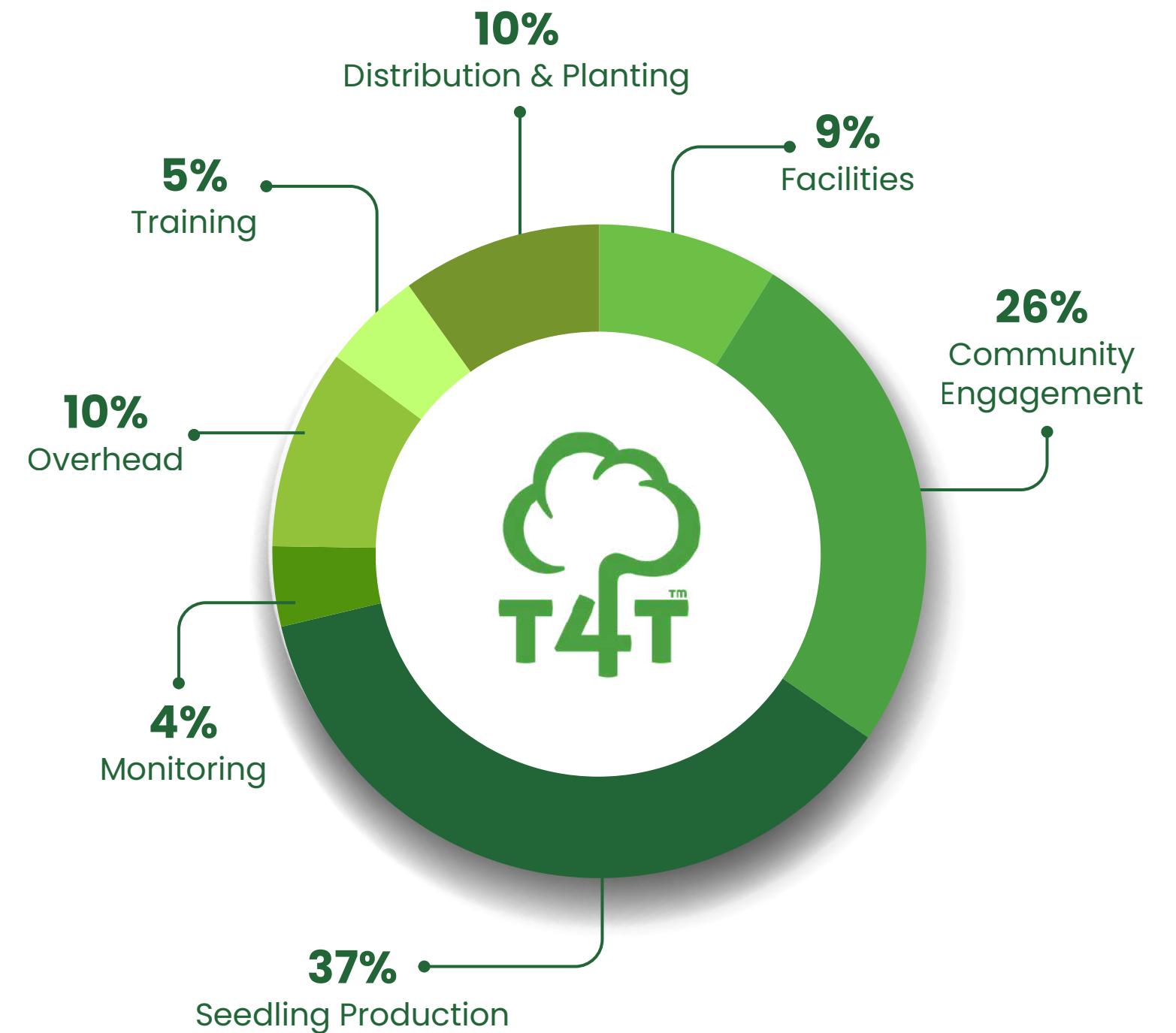
Every donation and contribution we receive from donors and sponsors goes directly toward supporting our tree-planting efforts. Our primary funding comes from companies through their CSR and ESG programs, alongside our generous individual donors.

As a non-profit organization, we do not allocate any funding for profit-driven purposes. We uphold full transparency and accountability for every expense in our operations.

90% of our budget is dedicated to planting trees, community engagement, farmer training, seedling production and distribution, planting and ongoing monitoring. **Every tree planted with your support helps grow not only trees – but also trust.**



## 2024 Expense Allocation





# Looking Forward

In the 2025 planting season, we aim to expand our tree-planting efforts beyond Java and Bali, reaching more regions across Indonesia. In Java, we will scale up mangrove restoration in southern Central Java to help local communities bringing back the deforested mangrove forest, continue reforestation in the Citarum and Citanduy watershed, and support drought-prone areas in Cidaun, West Java. In Bali, we will strengthen efforts to preserve subak - the traditional irrigation system in Jembrana Regency. New planting projects will also launch in East Kalimantan.

These initiatives reflect our ongoing commitment to ecosystem restoration, community support, and climate action nationwide.

As we grow our impact, we invite all sponsors and partners to stay on this journey with us. With your continued support, we can create even greater change – for the environment and the people who depend on it.

Thank you for growing with us. We are deeply grateful to have you walking this journey with us.

*Even **a single tree** can help protect our Earth.  
But **with many**, we can grow a greener future.  
And with each of our contribution, that future takes root.*







Every Tree Planted  
Brings Life to Earth  
**Plant a Tree Today!**



**Address :**

Jl. Telaga Bodas Raya 42  
Semarang - Central Java  
50231 Indonesia

P: +62 815-5438-4357  
E: [info@trees4trees.org](mailto:info@trees4trees.org)  
[www.trees4trees.org](http://www.trees4trees.org)

**Trees4Trees.ORG**

